

GRO (GREEN RO) ENCAPSULATED ELEMENTS

GRO-36/50/75



PENTAIR GRO ENCAPSULATED ELEMENTS

(GRO-36/50/75)

TECHNICAL CHARACTERISTICS

- TLC Thin Layer Composite membrane
- 100% dry membrane maximizing shelf life
- Double the recovery over standard RO elements
- High rejection stability at high input TDS
- Maximal Pressure: 6.90 bar
- Maximal Temperature: 49°C
- pH: 4-11
- Free Chlorine: 0.1 ppm
- Maximum TDS: 2000 ppm
- Maximum hardness 10 gpg (171 mg/L)

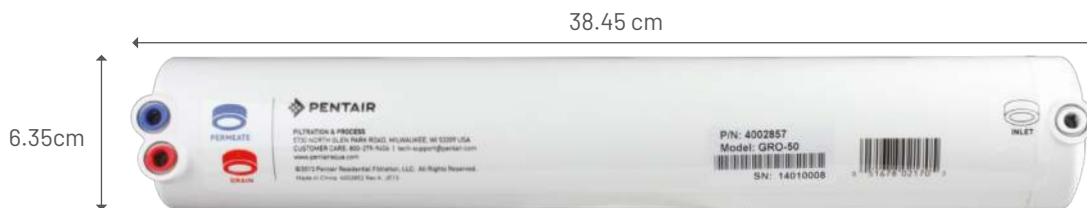


PRODUCT SPECIFICATIONS

Part number	Model	Nominal performance		Drain flow control (ml/min)
		Flow* Gpd (Lpd)	Rejection*	
4002573	GRO-36EN	36 (136.3)	96%	100
4002574	GRO-50EN	50 (189.3)	96%	150
4002575	GRO-75EN	75 (283.9)	96%	200

Note: The data above is based on internal laboratory testing.
 * Nominal performances are based on a 500 ppm softened tap water at 4.5 bar, 25°C, **50%** recovery after 24 hours. Individual element flux may vary ± 15%.
 - Membrane element performance can be affected by fluctuations in water quality
 - Membranes are not to be installed on microbiologically unsafe water supplies
 - Under regular RO system's maintenance (pre-filters changed on a regular basis) the membrane should last 2 years

DIMENSIONS



NSF COMPONENT The GRO-36EN, GRO-50EN and GRO-75EN are Tested and Certified by NSF International against NSF/ANSI Standard 58 for materials and structural integrity requirements